



Devon

Watch Out For Wildlife

Creature homes



Photo: R. Wiltshire

Your garden can be an important home for overwintering or hibernating animals as well as a feeding, nesting or egg-laying site in spring and summer. You can help them by leaving a wild corner with plants and old leaves and bark. Or you can have a go at making some creature homes yourself with some odds and ends that you may have at home.

Creature Wordsearch



FIND THESE WORDS:

BIRDSEED
COMPOST
GARDEN
TOAD
HIBERNATE
LADYBIRD
LEAVES
NESTBOX
LOGPILE

E	T	A	N	R	E	B	I	H	B
D					S		H		I
	R		L	E				N	R
N		I	V	O			E	T	D
	E	A	B		G	S		O	S
	E	D		Y	T	P		A	E
L			R	B	D		I	D	E
			O	A		A		L	D
		X			G		L		E
T	S	O	P	M	O	C			

Make a creature home!

Try this to attract ladybirds, lacewings and other mini-beasts:

Roll up some corrugated card in a tube cut from an old plastic bottle OR fasten a bundle of drinking straws with an elastic band.

Then hang this from a windowsill or a branch in your garden.

Help small mammals to nest:

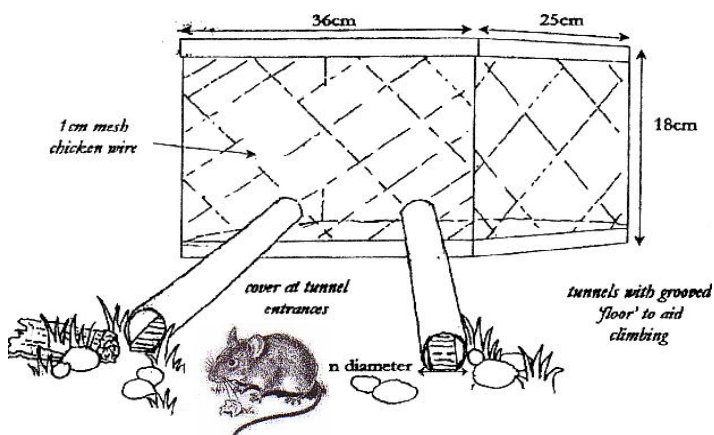
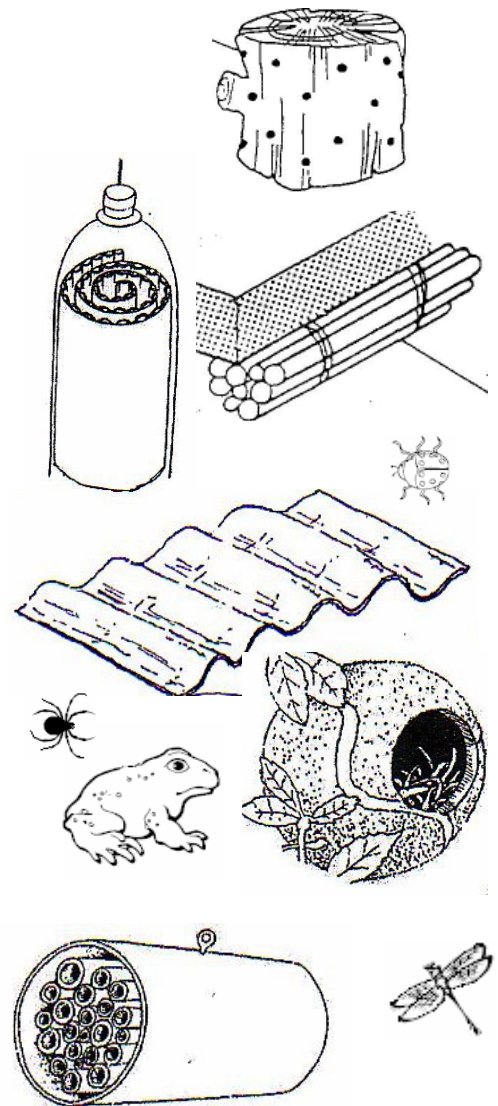
Just leave an old tennis ball with a hole cut in it OR some corrugated iron sheeting in a hedge.

Make homes for beetles, spiders, ladybirds and other mini-beasts:

Get an adult to drill some 5-10mm holes 1cm deep into logs or bits of wood and put in a safe place in your garden.

Help birds make their nests:

Put some dog, cat or rabbit hair, twigs, dry grass, leaves or moss in an old sock or tights, cut some holes in it and hang it up.



Build a Mammal Table (like this one) for mice and voles and put it near a window. If you light it up at night then remember that a red light will disturb animals less than white light. They like peanut butter - and lots of cover like stones and plants near the tunnel openings to hide in. Small mammals also eat oats, fruit, seeds, peanuts and bird seed.

contactus@devonwildlifetrust.org

Wildlife Watch, Shirehampton House, 35 – 37 St. David's Hill
Exeter, Devon. EX4 4DA